

## Clicker 4 Training for SBC Schools Session 1 of 2 - Using the Ready-Made Grids

### 1. **What is Clicker 4?**

It is a very commonly used piece of assistive writing software that is installed on all SBC primary school's networks.

It is a combination of Clicker - the grid software (at the bottom of the screen) and Clicker Writer the word processor (at the top)

A **Clicker Grid** can;

- contain text and or pictures
- speak the contents of a cell - by convention using the **right** mouse button
- send Text to Clicker Writer - by convention using the **left** mouse button
- send Pictures to Clicker Writer
- link to another grid
- be printed out

Grids can be used for speech output alone, with no sending of text - Log on as; 'Nursery Rhymes' where this is installed.

(Log on as; Simple Sentences as a demonstration of all this)

**Clicker Writer** can;

- speak the text - as it is entered or when you click on a word
- show the pictures it can match for words - Picture Writer
- be printed out

### 2. **Looking at a selection of Grids from "Clicker Grids for Learning.**

Please refer to Jennifer Girrity's booklet - available here;

<http://ictsan.edublogs.org/category/clicker/>

Use this document to log your exploration of the Clicker 4. You'll never find that useful grid again unless you make a note of it and this is the best place to do it.

### 3. **Looking at some of the "Users"**

A "User" is an environment where;

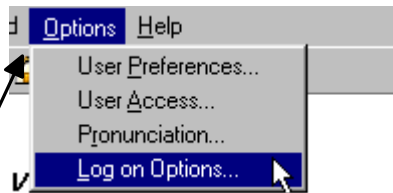
- grids can be stored
- User Preferences can be set - speech, font, instant pictures or not etc.
- Simple Sentences - a section where
- **Bordertalk** - the locally developed scheme to boost pupils' phonic skills and reading fluency
- **On- Screen Keyboard** - for pupils for whom use of the standard keyboard is not appropriate  
Note that you can move the Boundary between the Clicker keyboard grid and the
- **Our School's Grids** - the place to create your own grids.

Some Special Settings only;

- Symbol Writer - using the PCS symbols in writing and in grids (not yet implemented on XP/CC3 networks)
- Nursery Rhymes - the talking grids made by Susan Gibb

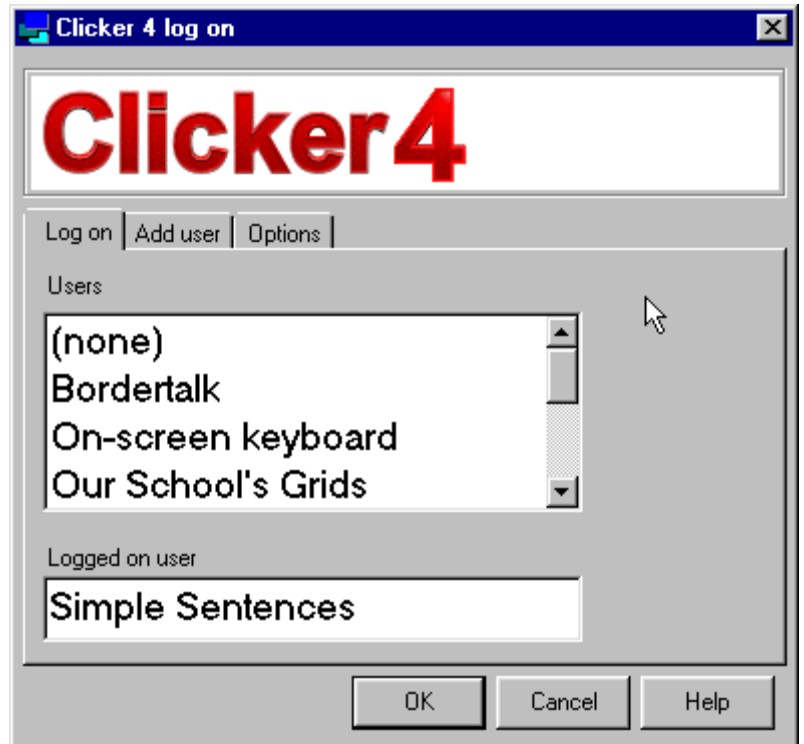
# The Clicker Log On Menu

This appears when you start up Clicker 4 or when you select the Menu Item; Options -> Log on Options



## Important

This is how you change users during a session using Clicker 4. Do not quit and reload Clicker.



### **(None)**

This is the Default User. Here you find all the ready made grids from "Clicker Grids for Learning"

### **Bordertalk**

This is the Borders Scheme for boosting phonic skills, reading fluency and spelling.

### **On-Screen Keyboard**

The means of writing for pupils for whom the actual keyboard is inappropriate

### **Our School's Grids**

You must be logged on as this user to use the bank of resources created in your school or to add to those resources. You can only create and save grids here.

### **Picture Writer**

This allows pupils to add pictures automatically as they type, if the word typed has a corresponding picture in the Clicker Picture resource

### **Simple Sentences**

This is a very simple method of allowing pupils to show they can copy sentences


### **Talking Tasks**

This set of tasks, similar to Bordertalk concentrates on formulating sentences rather than phonics

### **Talking Word Processor**

This allows easy access to the two most useful forms of speech feedback - "talk as you type", and "click on a word to hear it spoken"

4. **The Clicker Grid/Clicker Writer boundary.**  
This is movable - Try this out with the on screen keyboard

5. **The Hide Grid/Show Grid (Toggle) icon** 

Use this to temporarily hide the grid and then bring it back. This is especially useful while using Bordertalk and Talking tasks.

6. **Navigating your way around Clicker grids- Clicker Explorer**



Clicker Explorer is a filing system in which files appear in the grid.  
(You can use the standard Windows filer)



Home - Takes you back to the grid you see when you log on as the current user as the current user. When you are using the Clicker Grids for Learning, press this (twice sometimes) to get back to the start.



Use this to find your way round Clicker Explorer. If you get stuck use the Home icon





Take me back to the previous grid

Take me to the next grid in an alphanumeric sequence  
- eg from pets01 to pets 02

7. **Using some of the Clicker Writer tools**

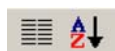


 new document  
(clear document)

 Speak marked text - not recommended. It is suggested that pupils use "Click on word to Speak option" where possible

8. **Further Clicker Grid Tools**   
Delete Letter - Delete Word (red) - Enter (blue)

9. **Use Wordlists - Sort Wordlist**



Some **Users** have Wordlists. You can add to the list, sort the words and use them from here. This may not work in all cases.