

How to Use the Speech Tool in Textease

Load Textease

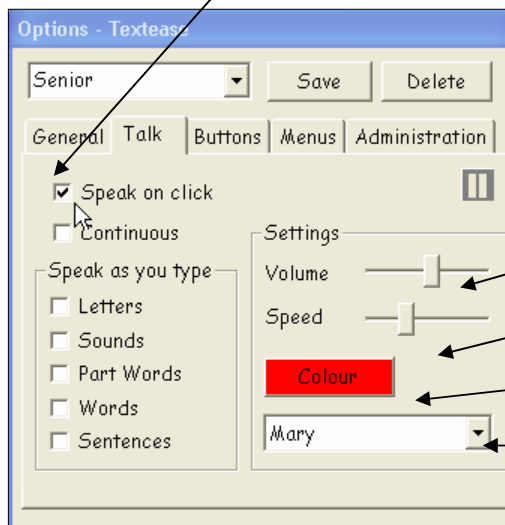
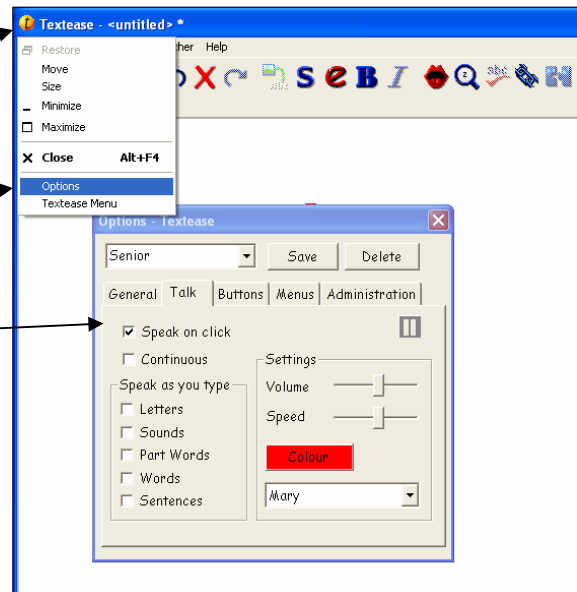
Click on the tiny yellow **Textease** icon in the top left of the Textease window

Click on **'Options'**

Click on the **'Talk'** tab

Then

Click beside **'Speak on click'** (This is usually the most effective option.)



You can also adjust :-

The volume

The speed of the speech

The colour of the highlighted word

The voice delivering the speech

Alternatively you can find the Options window this way.



When you first load the program the speech tool on the tool bar is greyed out.

Type a word on the page.

Double Click directly among the letters of the word to Highlight the word with a 'dotty box'.



The speech tool on the toolbar now becomes active.

Right Click on the Speech tool to see the Options window (see above)